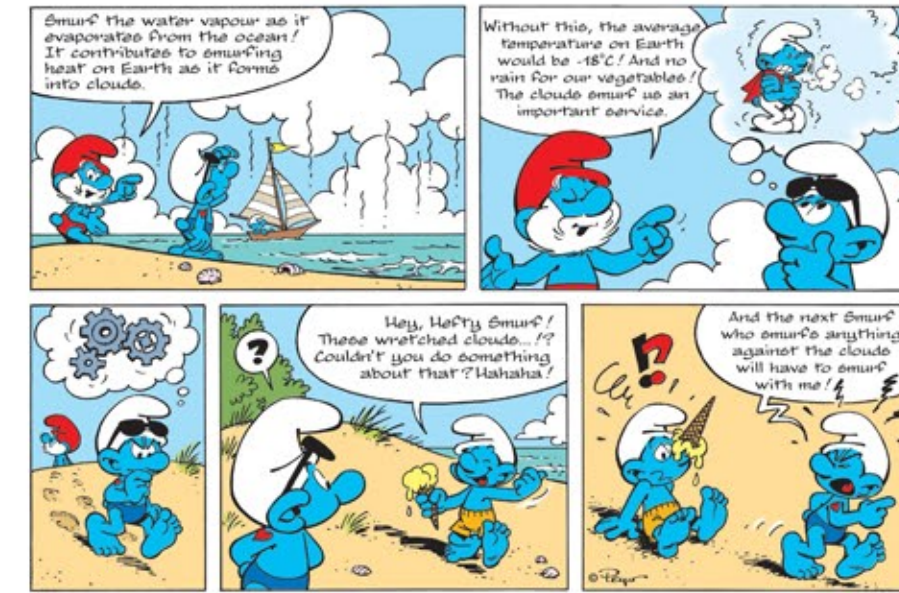
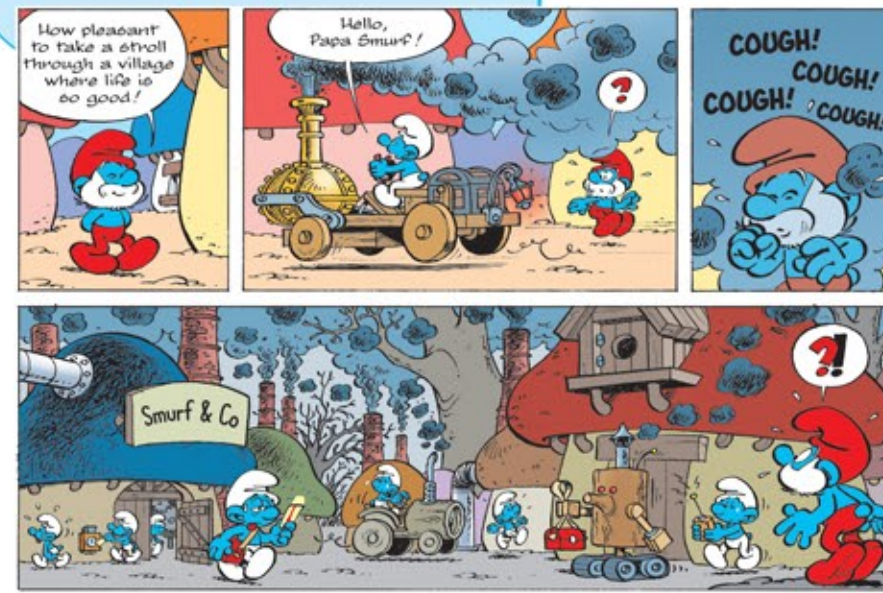


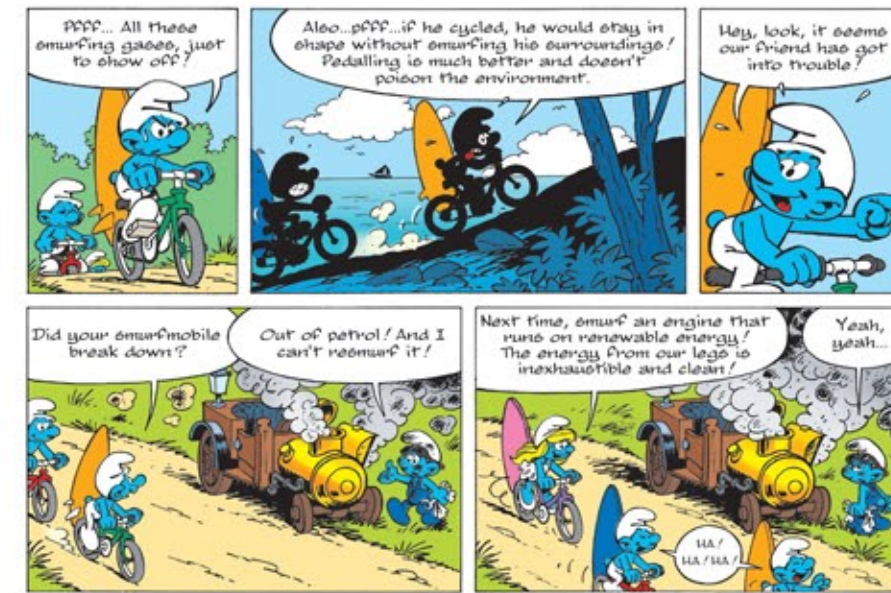
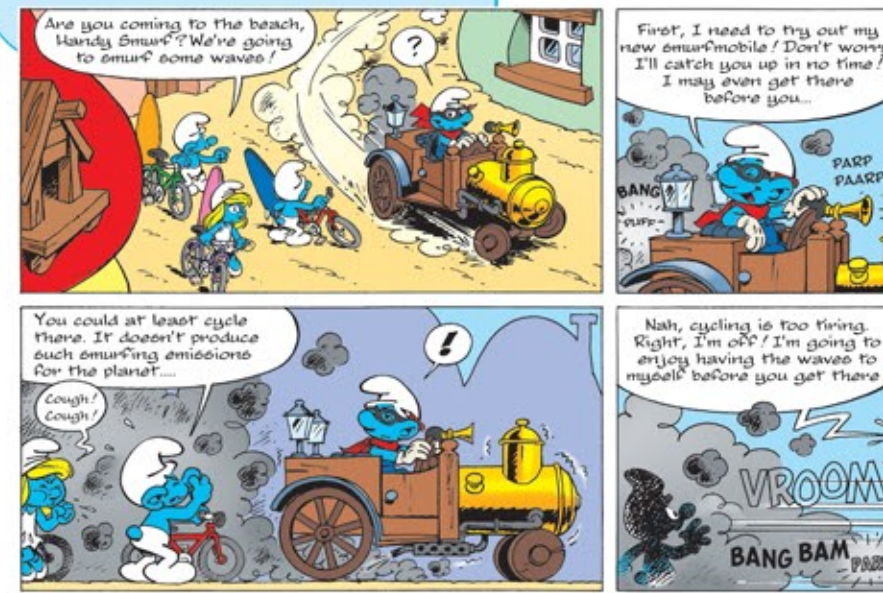
CLOUDS ARE SMURFING COOL!



NIGHTMARE IN THE SMURF VILLAGE



LET'S SMURF GOOD ENERGY!



THE GAME: THE SEA IS RISING

GOAL:
Reach the Smurf Village as fast as possible to help save the houses threatened by rising sea levels.

YOU NEED:
- One die
- Gaming pieces (you can use Smurf figures if you have any)

HOW TO PLAY:
All players start out on the ice shelf. The youngest player begins by throwing the die. Always advance your piece by as many spaces as indicated by the die. If you land on an 'action' field, you must follow the corresponding Smurf instructions. Climate change and its consequences will make your progress harder by putting obstacles in your way. However, concrete action will help you to move forward quicker. The first player to reach the village wins.

«ACTION» FIELDS

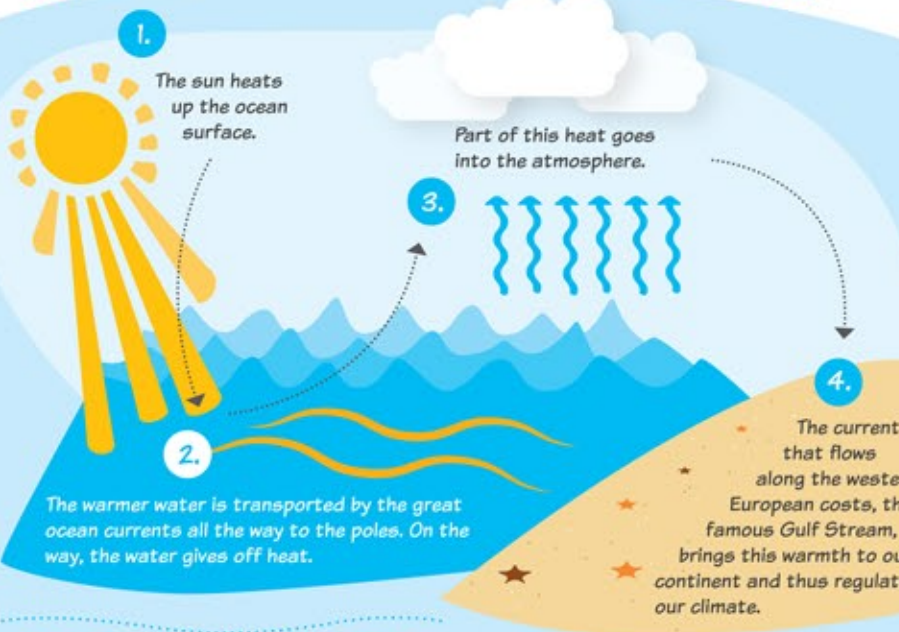
«Helping hand» «Obstacle»

Now it is your turn! Quick, save our village!

CLICK

THE OCEAN SMURFS THE CLIMATE

The climate is strongly influenced by the ocean. It is at the heart of the climate machine.



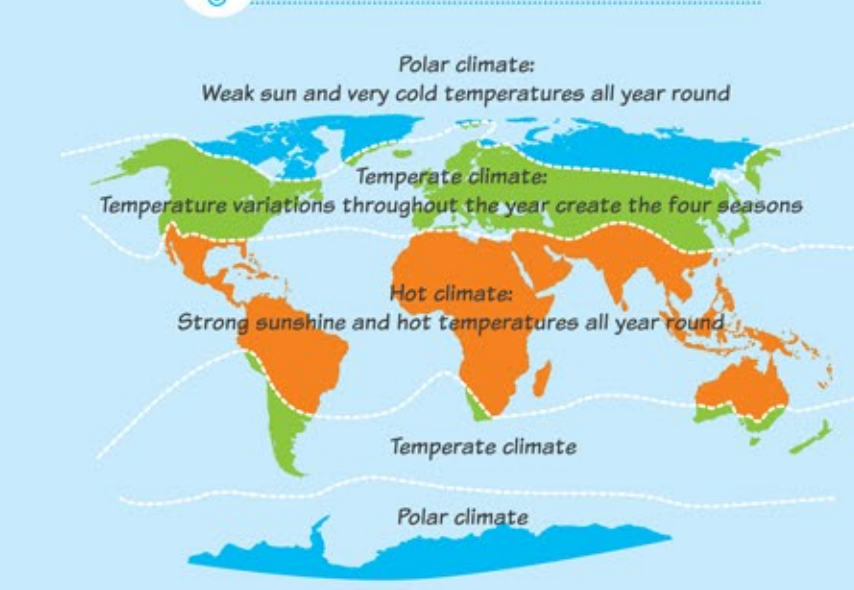
The ocean supplies a large part of the oxygen we need to breathe. We owe it every second breath we take!



Weather is what we smurf every day. Climate describes all weather conditions smurfed together over a long period of time in a specific location.



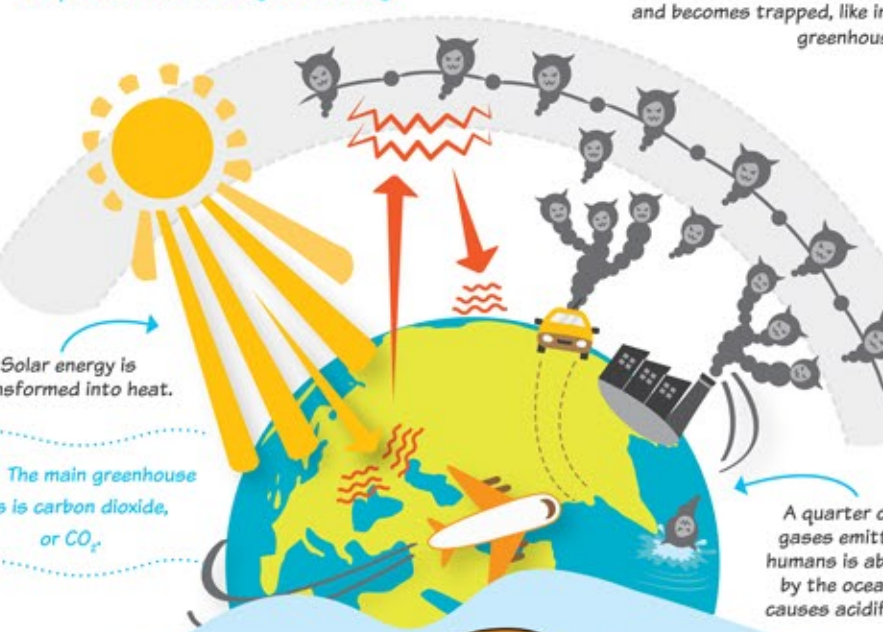
THERE ARE THREE MAIN CLIMATES:



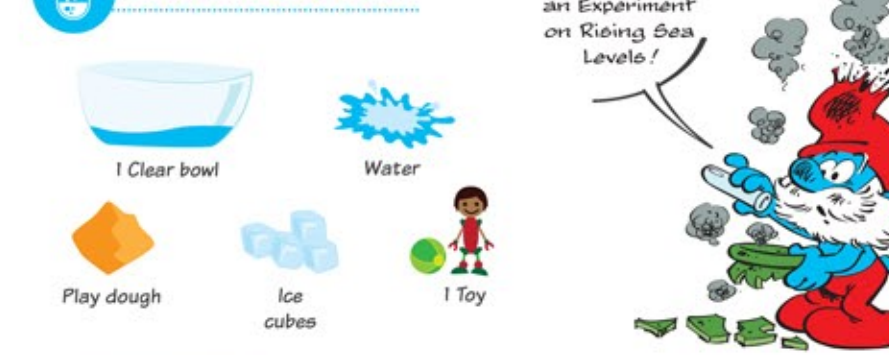
THE EARTH IS RUNNING A FEVER

The average temperature on Earth is rising because of greenhouse gases emitted by certain human activities. This phenomenon is called global warming.

WHAT ARE GREENHOUSE GASES?
They are gases in the atmosphere that retain the heat in the air. This heat can no longer escape and becomes trapped, like in a greenhouse.



TOY IN DANGER!??



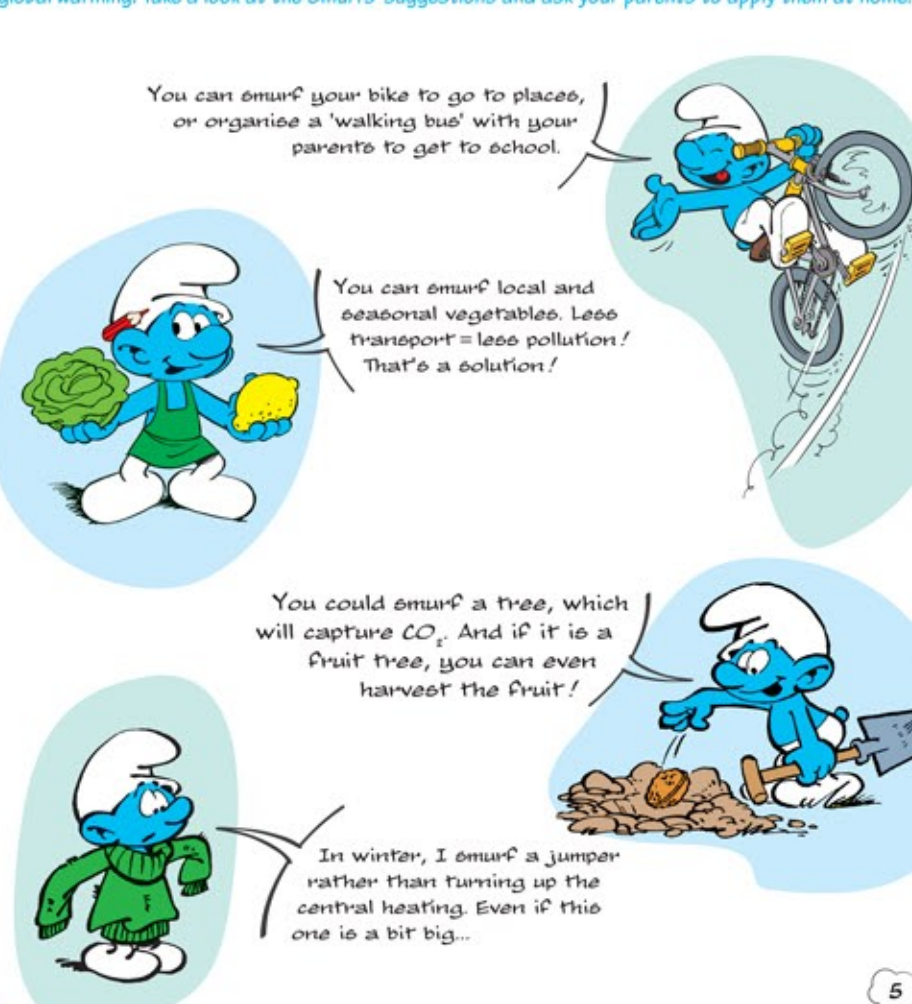
HOW IT WORKS:
1) Place two piles of play dough in the bowl.
2) Add enough water so that the top part of the play dough still sticks out. Make a line to mark the water level.
3) Place your toy on one of the piles, and the ice cubes on the other.
4) Wait until the ice cubes have melted. (They will melt faster in the sun!)

Observation:
Is your toy still safe and dry, or is it being threatened by the rising water?



HOW CAN WE PROTECT THE OCEAN AND HEAL THE PLANET?

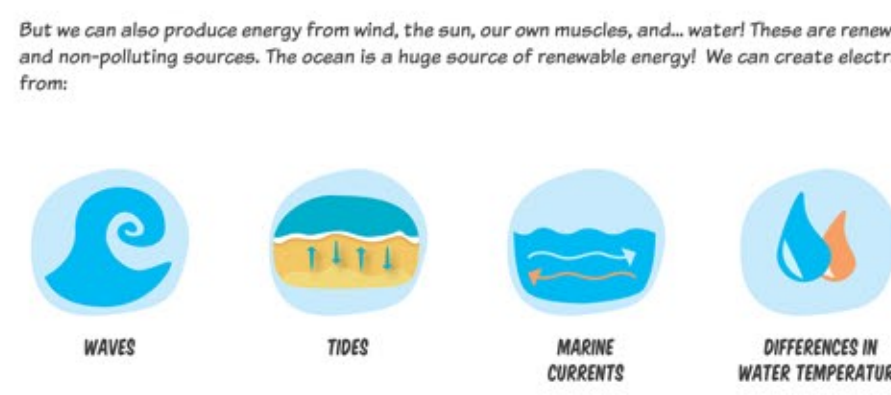
We can all do our bit to reduce our energy consumption and limit the emission of gases responsible for global warming. Take a look at the Smurfs' suggestions and ask your parents to apply them at home!



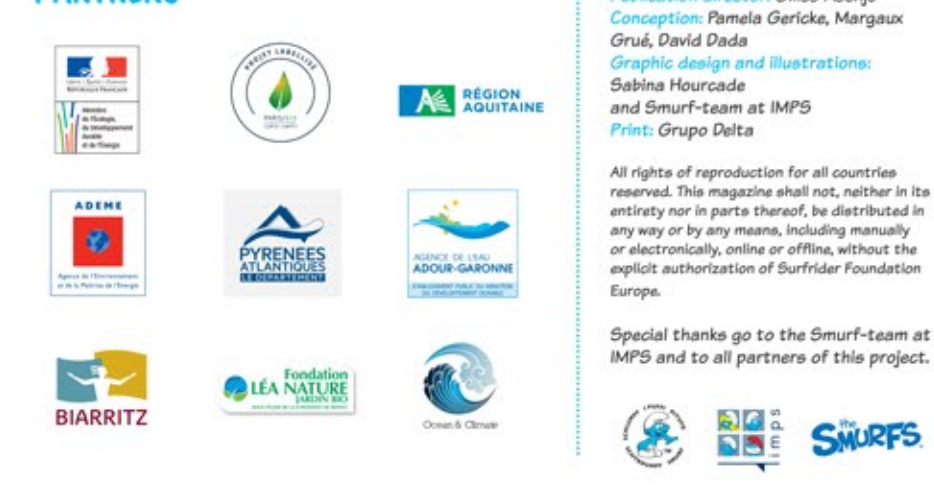
MARINE ENERGIES

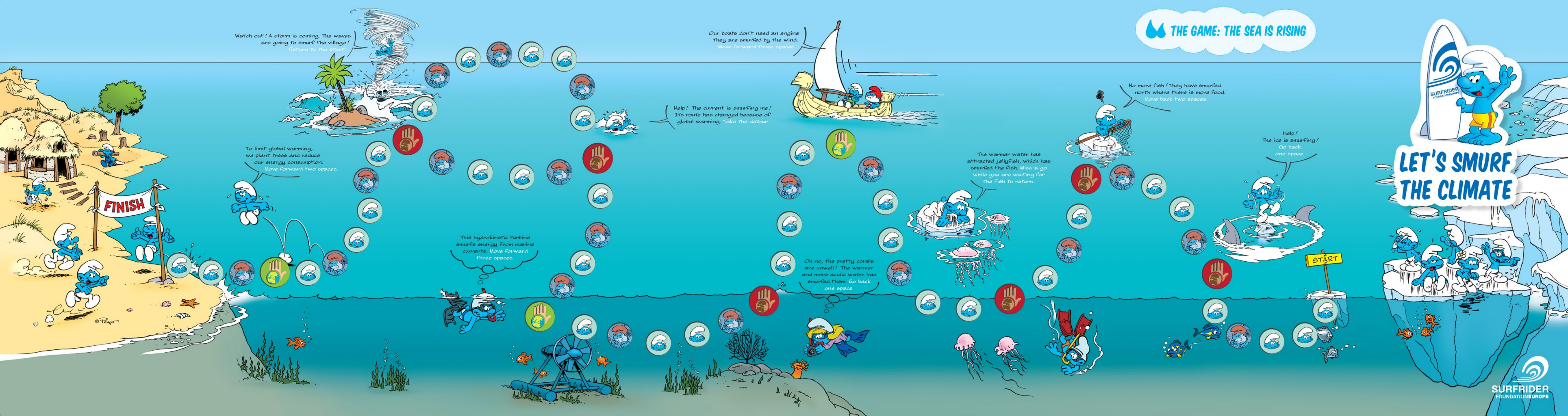
We need energy to watch TV, wash our clothes, turn on the light, run our cars... Energy is mainly produced from substances found in limited amounts in the soil: coal, oil, and natural gas. The burning of these substances generates greenhouse gases.

But we can also produce energy from wind, the sun, our own muscles, and... water! These are renewable and non-polluting sources. The ocean is a huge source of renewable energy! We can create electricity from:



PARTNERS





Watch out! A storm is coming. The waves are going to smurf the village! Return to the start.

To limit global warming, we plant trees and reduce our energy consumption. Move forward two spaces.

This hydrokinetic turbine smurfs energy from marine currents. Move forward three spaces.

Our boats don't need an engine. They are smurfed by the wind. Move forward three spaces.

Help! The current is smurfing me! Its route has changed because of global warming. Take the detour.

The warmer water has attracted jellyfish, which has smurfed the fish. Miss a go while you are waiting for the fish to return.

No more fish! They have smurfed north where there is more food. Move back two spaces.

Help! The ice is smurfing! Go back one space.

Oh no, the pretty corals are unwell! The warmer and more acidic water has smurfed them. Go back one space.

THE GAME: THE SEA IS RISING

LET'S SMURF THE CLIMATE